

470

# ÑUCANCHIC TARPUCUNAMANTA YACHAICUNATA RICSISHUNCHIC

PUNASUYU TARPUCUNAMANTA YACHAICUNATA  
YACHACUCCUNAMAN RICUCHIC PANCACUNA

1

PRIMERA EDICION EXPERIMENTAL  
QUITO - 1982

470



# ÑUCANCHIC TARPUCUNAMANTA YACHAICUNATA RICSISHUNCHIC

## PUNASUYU TARPUCUNAMANTA YACHAICUNATA YACHACUCCUNAMAN RICUCHIC PANCACUNA

1

MINISTERIO DE EDUCACION Y CULTURA

PONTIFICIA UNIVERSIDAD CATOLICA DEL ECUADOR

ILL - CIEI

PRIMERA EDICION EXPERIMENTAL

QUITO - 1982



## C A L L A R I

Punasuyupica cai tarpuimanta-yachaicunaca ñucanchic ñaupá taitacunamantallatac shamun, paicuna chiricunapi, sinchi llancashpa huatan huatan murucunata tarpushpa causashcacuna, cutin mana charishca murucunataca shuc llactamanta apamushpa ashtahuan mirachishpa ñucanchicman saquishcacuna.

Cai sumac yuyaicunata paicuna yachachishpa saquishcamanta, shinami cai alli yuyaihuan catina canchic, punchan, punchan llancaicunata rurashpa alli causaita charincapac.

Ñucanchicman ñaupá yayacuna alli yuyaicunata cushcamanta, shinallatac ñucanchicpash huahuacunamanca tarpuicunamanta, shuc yachaicunamantapash yacha-chishpa catina canchic, shina; ima quillacunallapi tarpuicunata ruranamanta, quincrai allpacunapi, panpa allpacunapi, huaicuyashca allpacunapipash ima-shina murucunata tarpunamantapash yachachishpa catina canchic.

Cai pancapica tucui marcacunamanta aillu-llactacunamantallatac yuyaicunata tantachishpa quillcashcanchic, quiquincunaman cai alli tiyashca yuyaicunata ama cuncancapac, ama chincachishpa saquincapac.

Ñaupá rucu yayacunaca paicunapac allpacunapi llancashpa, tarpuicunata rurashpa, huihuacunata huiñachishpa causashcacuna; paicunaca mana jatun llactacunaman llancancapacca llucshiccunachu cashca, quiquin aillu llactacunapi llami sumacta llancashpa causashcacuna, cunan pachapica mana ñaupá yayacuna shinaca causaita charinchicchu.

Chaimanta cai pancacunata quiquincunaman quillcashcanchic ñucanchicpash paicuna shina causaita catincapac.

---

**QUILLCACCUNA:** Luz María De la Torre A.  
José Aviléz L.  
Vicente Toasa P.  
Manuel Chalán M.  
Vidal Sánchez C.  
Humberto Marcatoma T.

**YANAPAC:** Ramiro Cerda A.

**SHUYUC:** Carlos Castillo Z.

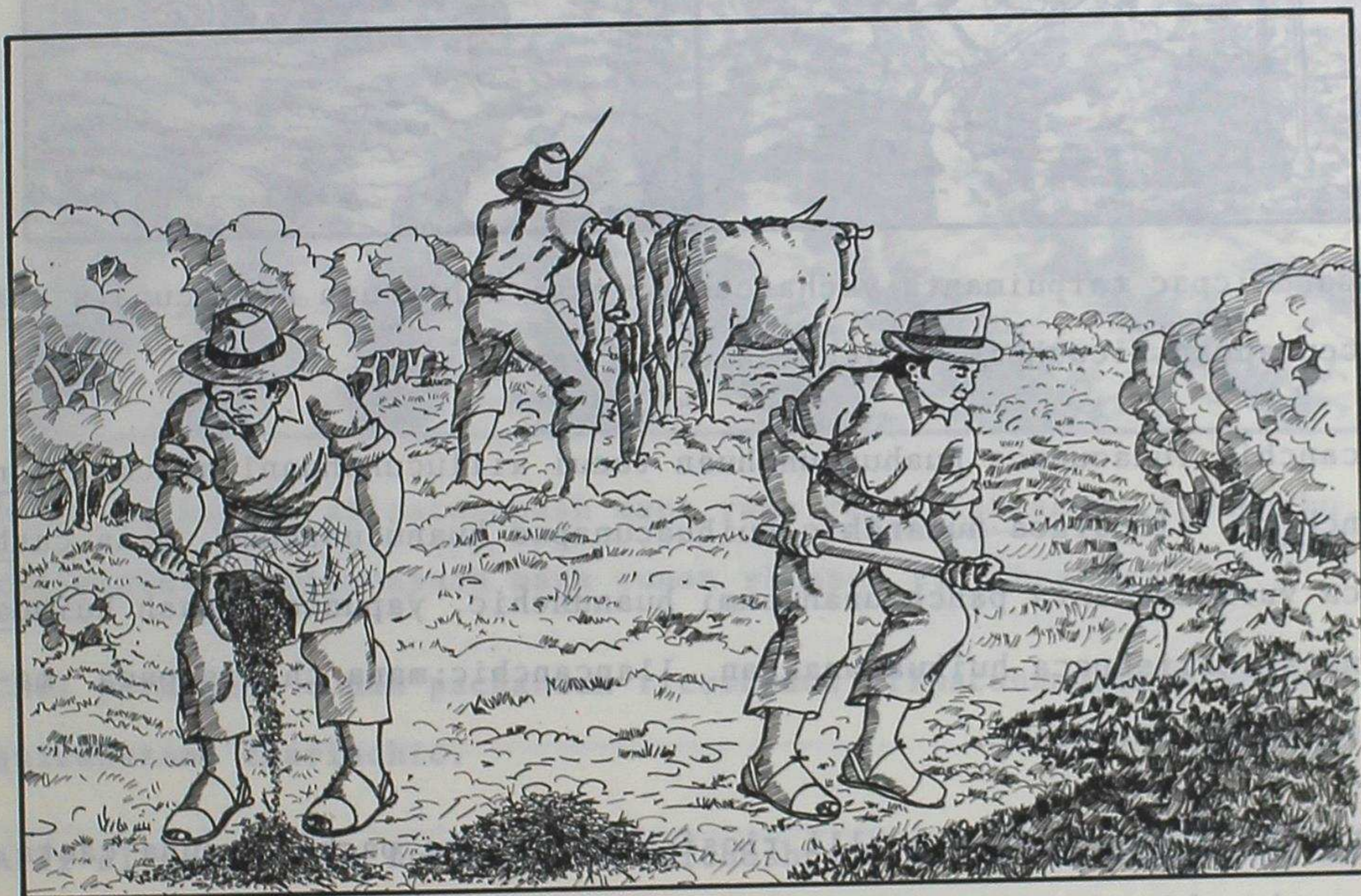
**QUILLCATA SHUYUC:** María A. Ullauri V.



## SHUCNIQUI YACHACUNA (1)

### RUNACUNAPAC TARPUNA YACHAICUNAMANTA

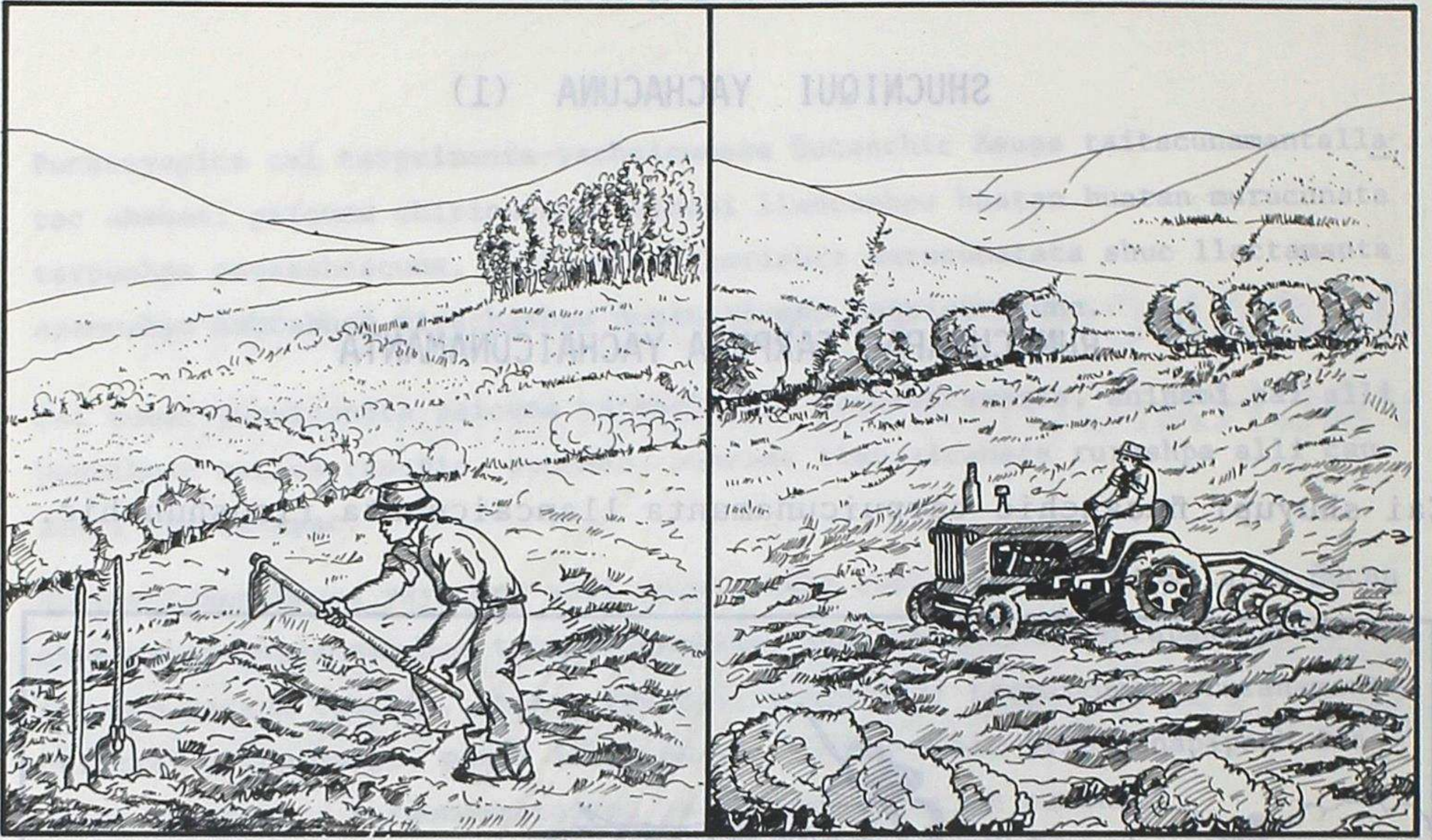
Cai shuyupi ñucanchic tarpuicunamanta llancaicunata ricushunchic.



Tarpuicunamanta yachaicunaca tucui ñucanchic punchan punchan rurai cunami can, yapuicunata, sachacunata anchuchina, jallmanacuna, tarpuicunapi huanucunata churaicuna, tucui tarpushca yuracunamanta ricuicuna, shuc llancaicunapashmi can.

Ñucanchic allpacunapica chai chiripacha-rupaipachapi yacharishca murucunatami tarpunchic, ñucanchic huahuacunapac, aillucunapac micuna tiyachun.





Ñucanchicpac tarpuimanta yachaicunaca chai ashtahuan allpacunata chariccunahuan ricushpaca chican chicanmi can.

Ñucanchic runacunaca huahuacunahuan tucui aillucunahuanllatacmi llancanchic; allpataca ñucanchic huihuacunapac huanucunahuan, mana cashpaca yuracunamanta pancacunahuanmi huanunchic, yapuncapacpash huihuacunata charishpaca huihuacunahuan llancanchic; mana charishpaca maquillahuan ruranchic.

Runacuna causai-pachata alli ricsishcamanta ima pacha tarpuna cacta ña yachanchic, ima shina llancaicunata rurana canchic, shinami tarpushcacunapash mana yapata chincarinchu.

Cutin chay allpa chariyuccunaca achca allpacunata charishcamanta pitapash asha cullquita cushpa paicunapac allpapi llancachun nishpa pu shancuna; yapunacunatapash mana ñucanchic shinaca rurancuna, paicunaca yapuna antahuacunahuanmi tarpuncapacca yapuchincuna; shinallatac chai quincraicunapi, huaicuyashca allpacunapi yapuna antahua mana yaicuita ushacpi, chaicunapi ñucanchic huacracunahuan yapuchun nishpami ñucanchictaca chaicunapi llancachun pushashpa rincuna.





Ñaupá pachapica allpacunapash mana yapa raquirishcacuna cashcachu,  
chaimanta llaquicunapash mana cunan shinaca tiyashcachu

Chai pachahuan cunan pachahuan ricushpaca allpacunamantaca achca lla  
quicunatami charinchic.

Alli allpacunataca ñucanchicta quichushpa urcucunaman cachashca mai-  
pi mana alli causanacunaman, yapa chiri, huaira, rasu, tamia, runtu,  
cai tucui llaquicunahuanmi causanchic.

Ñucanchic tarpushca murucunapash caicunapica ima shinapash pucuncuna  
llami.

Huaquin llactacunallapimi runacunaca aillu-allpata charincuna, caicu  
napica tucui pura yanaparishpami llancashpa causanchic. Cutin tarpui  
cuna pucucpica tucui caipi llancac aillupurami murucuna cacpi ñucan-  
chic micuncapac, quihuacuna cacpi huihuacunaman carancapac; shinami  
chai capucunataca raquirinacunchic.



YUYARISHUNCHIC:

1.- Nucanchic allpacunata llancancapac murucunata, yuracunata ima tarpuicunata rurancapacca ima shinatac ñucanchicca ruranchic.

2.- Aillu-allpacunata charishpaca picunallatac llancanchic; ima shina yanaparinchic.



3.- Tucui pura yuyanacushpa ñucanchicpac tarpuicunamanta, mishucunapac tarpuicunahuan ricushpa, pactachishpa; ima llaqui tiyashcanta rimanacushpa, chai quipa quillcashunchic.

4.- Ñaupacha pachapica ñucanchic allpacunaca ima shina cashca, chai pachacunapica allparaicuca llaquicunata charircacunachu.



5.- Mishucunaca ima nishpata ñucanchic allpacunataca quichushpa  
chai mana alli llactacunapi causachun cacharcacuna.

MUSHUC SHIMICUNA:

Tarpuicunamanta yachaicuna ..... Tucui ñucanchic causaipi allpacuna  
napi, tarpushpa, huanushpa, yuracu  
nata ricunamantami can.

Yapuna antahua ..... Yapuncapac jillaicuna.



Tarpushca yura ..... Nucanchic allpacunapi ima yuracuna,  
murucuna tarpuicunamantami can.

Chiri-rupaipacha ..... Tucui cai Causai-pachapi tiyaccuna-  
man chirichishpa, cunuchishpapash  
charin.

Muru ..... Uchilla muyucuna, shina: poroto, sa  
ra, shuccunapash.

Chican ..... Shuctac, shuctac nincapac shimi.

Llancana ..... Ima ruraicunapash, shina chacracuna  
pi llancana, yapuna caspicunata ru-  
rana.

Causai-pacha ..... Causana pachapi tucui tiyaccuna.

Raquirina ..... Imatapash achca pitishcacunapi sa -  
quinamanta.

Aillu-allpa ..... Cai allpacunaca mana shucpacllachu  
can. Caicunaca chai aillu-llactapi  
causac runacunapacmi can; caicunapi  
ca tucui pura yanaparishpa llancan -  
chic.

Capucuna ..... Catuncapac, micuncapac, tucui cha -  
rishcacuna.



## ISHCAINIQUI YACHACUNA (2)

### IMA SHINA RUNACUNACA YURACUNAHUAN ALLI AILLUYARISHPA CAUSANAMANTA

Cai shuyupi ima shina ñucanchicca yuracunahuan ailluyarishpa causana manta ricushunchic.

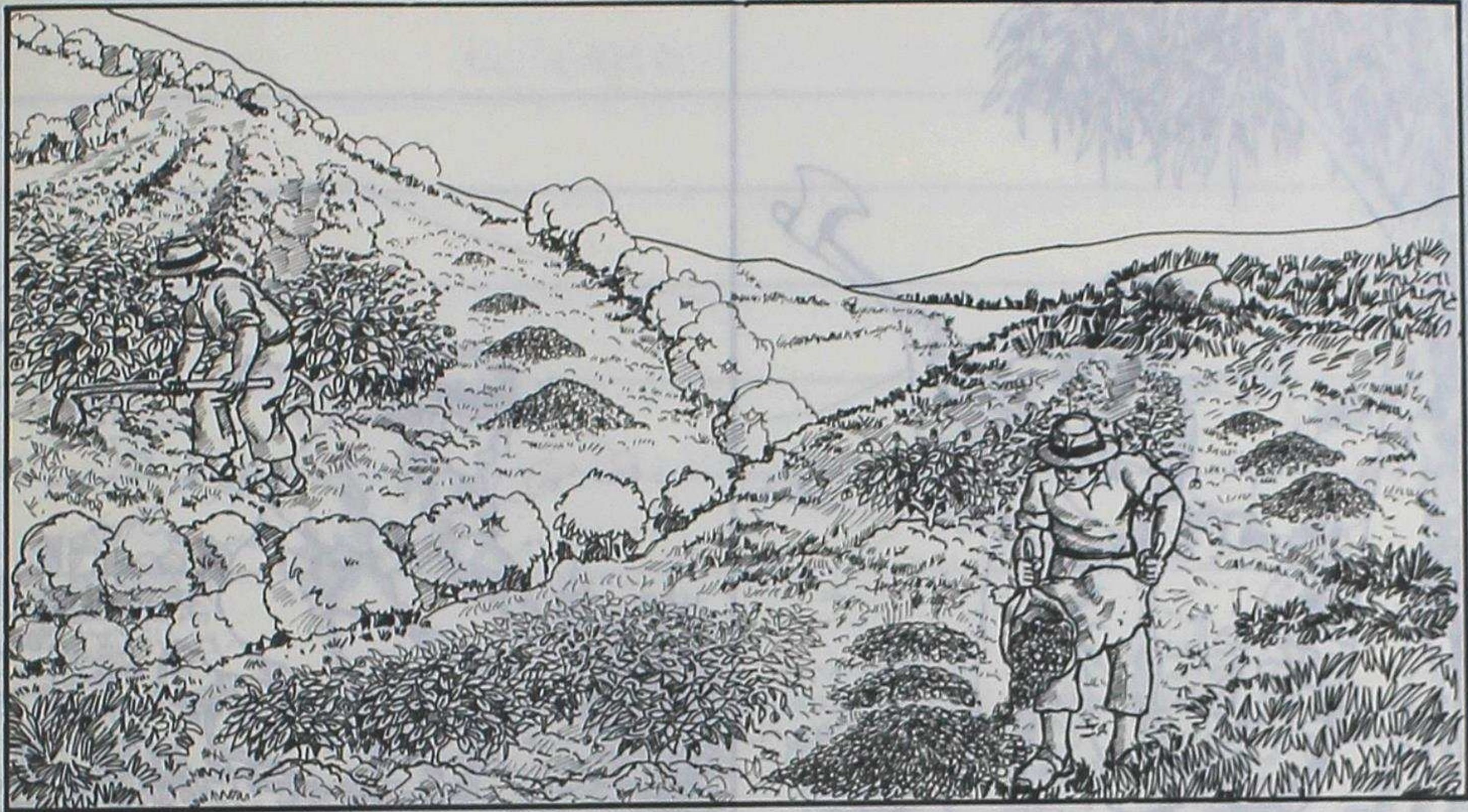


Ñucanchic allpacunapica tucuisami yuracunatami tarpunchic.

Cai yuracunahuanca alli ailluyarishpa causanchic, chaimanta caicuna alli huiñachun, alli murucunata pucuchunca manarac tarpucllapitac allpataca sumactami huanushpa saquina canchic, chaimantami yapunata callarinchic: quincraiman, uraiman, uchpa shina huachunalla saquin-cacaman.

Huacracunapac, cuicunapac, cunucunapac, llamacunapac, shuc huihuacunapac huanutapash churana canchic. Cai huihuacunapac huanuca sumac-cunami can, ishcai, quimsa, ashtahuanpash huatacunapac tarpuipac alli cacpi.





Shinallatac cai yuracunahuanca tarpushca punchacunamantallatac huanuta churashpa, yacuta jichashpa, ama nima uncuicunata japichuñ ricushpami charinchic, shinallatac ama huacllirichunpash ricunchic, ñucanchicman, huihuacunaman tucuicunamanllatac micuna murucunata cucpi.

Cai murucunata tarpuncapacca tucui huasipi tiyac aillucunami tucuipu ra tucushpa llancanchic, shinallatac jallmashpa, ña pucushpapash tucuipura yanaparishpa pallanchic.

Ñucanchic tarpushca yuracunaca, ñucanchictaca sumac causaitami cunchaimantallatac allpataca mana yancataca saquinchicchu, tarpushpallami causanchic.

Shinallatac yuracunapash ñucanchic mana ricucpica mana allita causanchu, tucui pachapimi ricushpa, muyushpa purinchic.

Ashtahuanpash ñucanchic ricucpica yuracunapash jahuallami huiñancuna, chaimi murucunapash alli aparin, alli pucunpash; chaipimi mana llaquirinchic, micunacunapash tucui huatapac pacta-pacta tiyan.

Shinami cai yuracunaca ñucanchicman, huihuacunaman micunata cushpa yanapan; shuc llancaicunapipash mutsunchic.





Cai yuracunaca chai quincraicunapi tarpushpaca allitami huiñan, caita rurana rantica chai tiyashca yuracunatapash cuchushpa tucuchina cunchic chaimantami sachacunapash, shinalla saquiricuncuna yuracuna illac chaipi tiyac huihuacunapash tucuricuncuna, ashtahuancarin cai allpacunata shina saquicpica shamuc pachacunapica tuñirishpa, tuñirishpami catinca.

Chaimantami cunan pachapi yuracunata tarpushpa catina canchic; shina chai quincraicunapi, mana murucuna tarpuita ushana allpacunapimi tarpuna canchic, quipaman ñucanchic shamuc aillucunaman ashtahuan yanapachun; cai Causai-pachatapash alliyachichun.



YUYARISHUNCHIC:

1.- Nucanchicca ima shina yuracunahuanca causanchic.

---

---

---

---

---

---

---

---

---

---

2.- Ima shina yuracuna alli huiñachun, alli pucuchunca charina canchic.

---

---

---

---

---

---

---

---

---

---

3.- Quiquinpac causaipica yuracunaca ima shina allpacunataca ama tuñirichun yanapan.

---

---

---

---

---

---

---

---

---

---



4.- Yuracunataca maicunallapitac tarpunata ushanchic.

---



---



---



---



---



---



---



---



---



---



---



---



---



---



---



---



---



---



---



---



---



---

5.- Cai Causai-pachapi yuracuna mana tiyacpica tucui causaccunaca imashi tucunchicman.

---



---



---



---



---



---



---



---



---



---



---



---



---



---



---



---



---



---



---



---



---



---

MUSHUC SHIMICUNA:

Tucuisami ..... Tucui laya tiyashcacunata ricuncapac.  
 Jahualla ..... Napash, ñapash.



## QUIMSANIQUI YACHACUNA (3)

### ÑAUPA PACHAMANTA TARPUICUNA

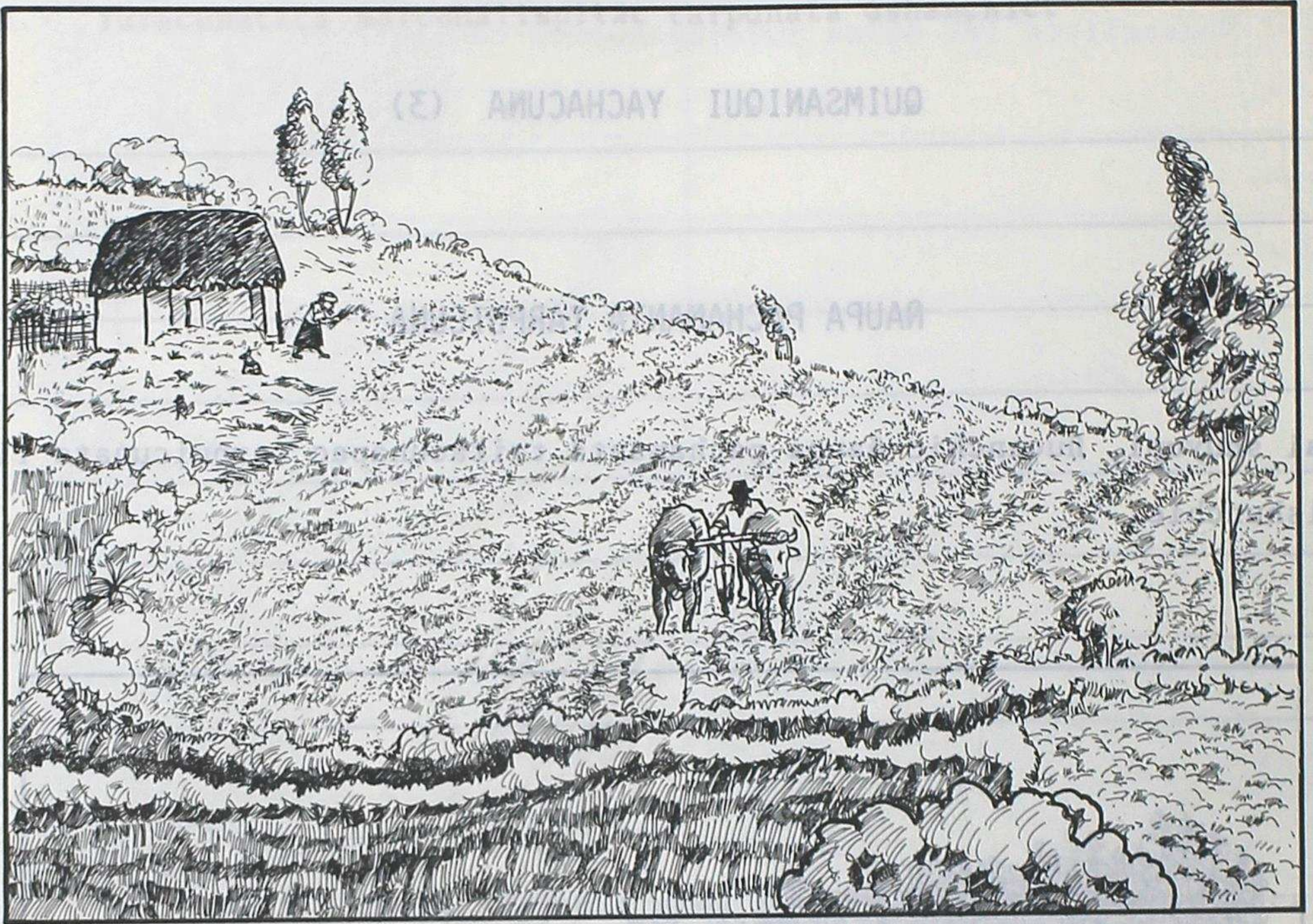
Cai shuyupi, ñucanchic ñaupá pachamanta taitacunapac tarpuicunata ricsishunchic.



Ñucanchic ñaupá pachamanta yayacunaca urcucunapi ashtahuan chiri rasu llactacunapimi tarpushpa causaccuna cashca. Tarpuicunata rurancapacca quiquin muyucunallatacmi tarpuccuna cashca, mana maimanta muyu cunataca apamucchu cashca.

Caipica achca murucunata, quihuacunatapash tarpuccuna cashca, shina: sara, papa, mashua, oca, melloco, habas, tauri, toronjil, manzanilla, borraja, shuccunatapash.





Ñucanchic yayacunaca mana alli pachacunapi tarpushpa; mana allpacunata, yuracunata janpishpapash tucuisami, tucui pachapipash murucunataca pallac cashca. Shinami tucui huatapac micunacunataca pacta-pacta, allichincapacpash chariccuna cashca.

Cai allpacunapica taucasami papacunata tarpuccuna cashca; caicuna shina: ulashihui, huata, leona, yana, uchu rumi, uvilla, chola, yuncara, catahua, conejo, castilla, yurac chaucha, puca chaucha, allcu chaqui, chanpi, huacra-sinca, shuccunapash.

Shinami tucui llactacunapica achca sami papacunata ricsinchic; caicunaca ñaupa pachamanta tiyashcacunami can.





Cutin cunan pachapica murucu-  
nata, yuracunata, achcata jan  
pishpami pucuchin, shinapash  
cai janpicunata rantincapacca  
achca cullquita mutsunchic.

Cai janpicunataca jatun llactacunallapimi rurancuna. Chai janpicuna  
taca ashtahuan mishucunapurami rantinacuncuna, shinapash paicunaca  
ñucanchicmanpash paicunapac yuyaicunata yachacuchun nishpami shina  
apamushpa catuncuna.

Shinami ñucanchic sumac causaita huacllichincuna, tucuicunallatac cun  
cashpa catinacunchic; chaimanta mana chai janpicunallataca shuyacuna  
canchicchu.

Cai yuracunaca, allpacunata janpicunata churariacucllapimi pucuita-  
ca ushan; mana churapica mana alli pucun, allpacunapash huacllirish  
pami saquirin.

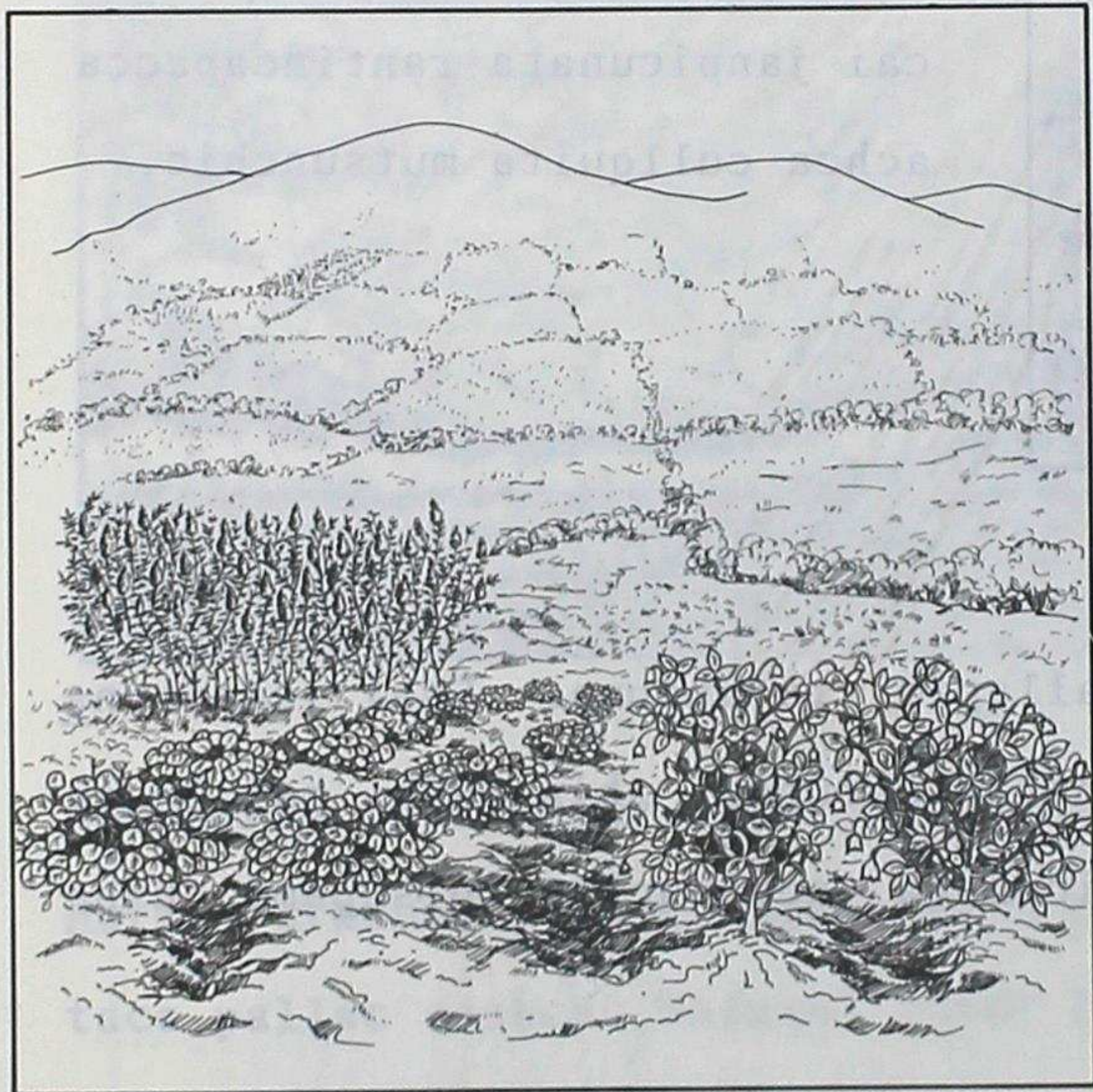
Chaimanta ñucanchic ñaupá yayacunapac sumac yuyaicunata charishcama  
ta catina canchic; huihuacunapac huanuta tantachishpa, ismuchi  
allpacunapi, tarpushcacunapi churana canchic alli huiñachun, alli pu  
cuchun sumac murucuna tucuchun.



## IMASAMI ÑAUPA PACHAPI TARPUICUNA TIYASHCAMANTA

Ñucanchicca: ñaupa pacha tarpushca murucunata, shuc llactacunamanta apamushca murucunatapashmi ricsinchic.

### ÑAUPA PACHAMANTA TARPUSHCA MURUCUNAMANTA



Cai tarpuicunataca ñucanchic ñaupachayayacunamanta ricsishcacunata ñucanchicman saquishcacunami can; shina: mashua, oca, melloco, quinua, cebada, shuccunatapash.

Paicunaca sumacta tarpushpa, huiñachishpa, pucuchishpapash charircacuna; micunacunata yanuncapapash cai murucunahuanllatac ashtahuan yanuncuna cashca.

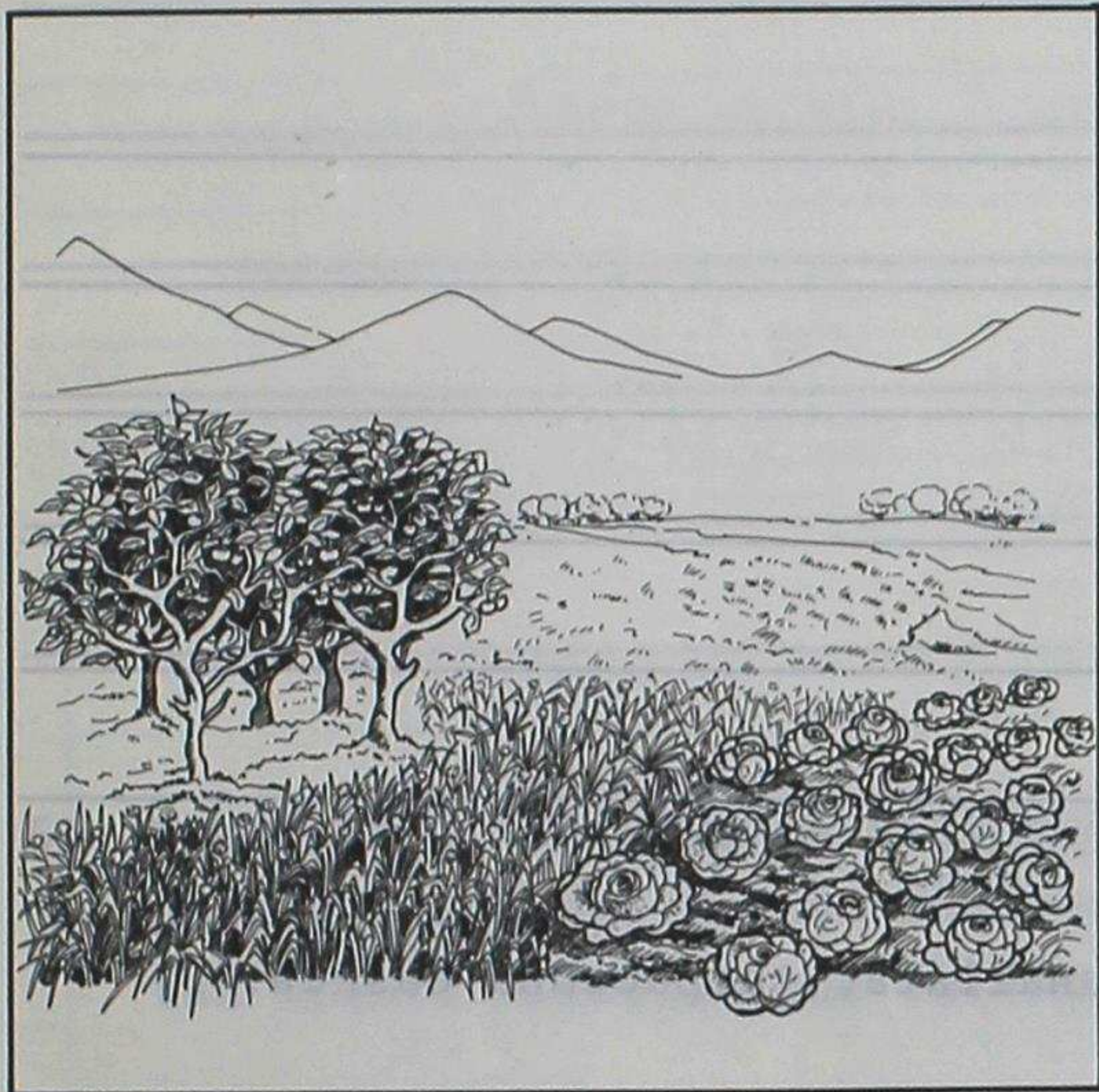
Cai murucunata micushpaca sumac causaitami charishcacuna, uncuicunapash mana jahualta japicchu cashca chaimantallatac tauca huataacunata causashcacuna.

Chai pachata cunan pachahuan ricushpaca tucuicunallapitac achcami huacllirishca, micunacunapi cashpa cunanpica chai antashca, mana alli micunacuna, causaita huacllichic micunacunatami micunacunchic; chaimanta asha huatacunallatacami causanacunchic uncuicuna ñapash, ñapash japicmanta.

Ashtahuan shuc llaquica cai sumac micunacuna melloco cashpa, quinua cashpa, cebada cashpa, shuccunatapash; caicunata micuna rantica jatushpa shuctac mana alli micunacunata rantishpami causanchic.



QUIPA APAMUSHCA TARPUICUNA



Cai tarpuicunataca ñaupa inca pachamantallatac tarpushpa charinchic; shina: papa, cebolla, col, maíz, arveja, manzana, pera, palta, shuccunatapash manarac huaira apamushca mishucuna shamuclla pitac ricsishcacuna cashca.

Cai yuracuna murucunaca Tahuantinsuyu tiyashca pachamantallatac, aillu pura shuc murucunata, shuc llactacunaman cachashpa, cutin shuc llacta cunamanta quiquin llactaman tarpuncapac apamushpa shinami mirachishca; chai murucunataca cunan pachacamanpash charinchic.

Cunan pachapipash shinallatac ñucanchic llactapi huaquin murucuna chin caricucpica shuc aillu llactamanta mashcashpami apamunchic; shinami mirachishpa mirachishpa charinchic.

Huaquin llactacunallapimi shuc muyucunaca ña chincaricushca, chai mana ñucanchic apamushcacunalla saquiricushcacuna, shinapash caicunata tarpuncapacca allita janpishpa, mana yapa chiri pachacunapica tarpuita ushanchicchu, chaimantami ashtahuan llaquiyarinchic.



**YUYARISHUNCHIC:**

1.- Ñucanchic ñaupá taitacunaca ima shina tarpushpa causaccuna cashca.

---

---

---

---

---

---

---

---

---

---

2.- Ñaupá yayacunaca ima tarpuicunallatac tarpuccuna cashca.

---

---

---

---

---

---

---

---

---

---

3.- Ñucanchic taitacunaca ima pachacunallapi, ima allpacunallapi tarpuccuna cashca.

---

---

---

---

---

---

---

---

---

---



4.- Naupa pachapica ima shina murucunataca achcata pucuchiccuna cashca; cutin cunan pachapica ima nishpashi chashnallatacca mana pucun.

5.- Yuracunata, murucunata alli pucuchunca ima huanucunahuan ashtahuan pucunchari; huihua huanucuna churashpa, mana cashpaca jatun llacta mishucunapac rurashca huanucunahuan; imatac yuyanqui.

6.- Naupa pachapica ñucanchic yayacunaca ima murucunallatac puchishpa micuncapacca chariccuna carca.



7.- Cunan pachapipash ima shina murucunataca ama chincarichunca  
mirachishpa charina canchic.

---

MUSHUC SHIMI:

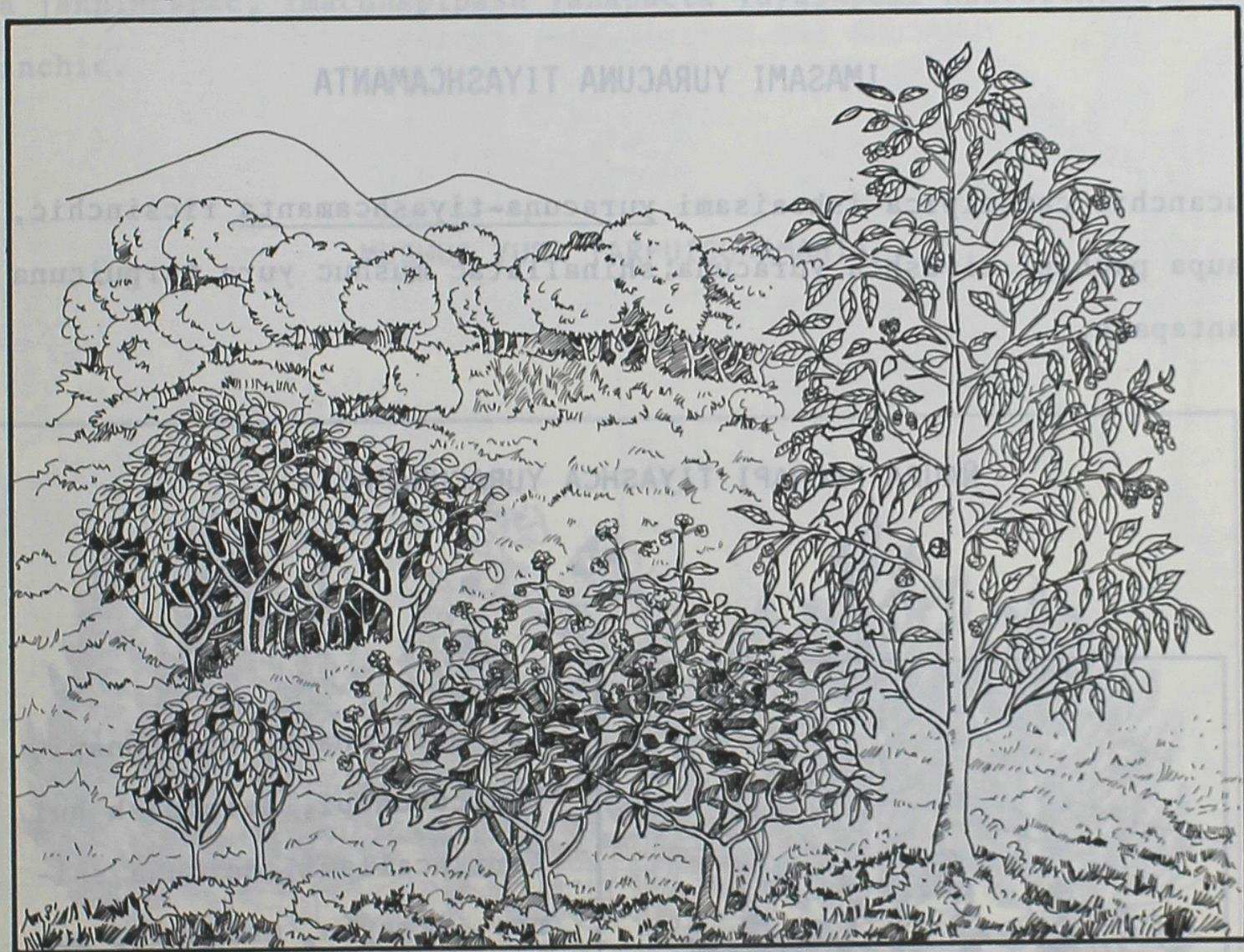
Antashca micunacuna ..... Anta puru ucupi huacaichishca  
micunacuna.



## CHUSCUNIQUI YACHACUNA (4)

### NAUPA PACHAPI TIYASHCA YURACUNAMANTA

Cai shuyupi ñaupá pachamanta tiyashca yuracunata ricushunchic. Ima shina allpacunataca mana huaclichishpa charishcamanta.



Naupa pachapi ñucanchic yayacunaca, quiru yuracunataca mana tarpuccu na cashcachu.

Cai yuracunaca paicunallatacmi huiñashcacuna, mana pipash apamucllapitac, mana pipash tarpucllapitac urcucunapi, quincraicunapi, sachacunapi, maipipash huiñaccunallami cashca.

Caicunataca Naupa-pachamanta yuracunami shutichishcanchic, ñaupá pachamantallatac shina causacpi. Cai yuracunaca jatuncuna, racucuna, panca sapayuccuna tucushpami huiñaric cashcacuna.



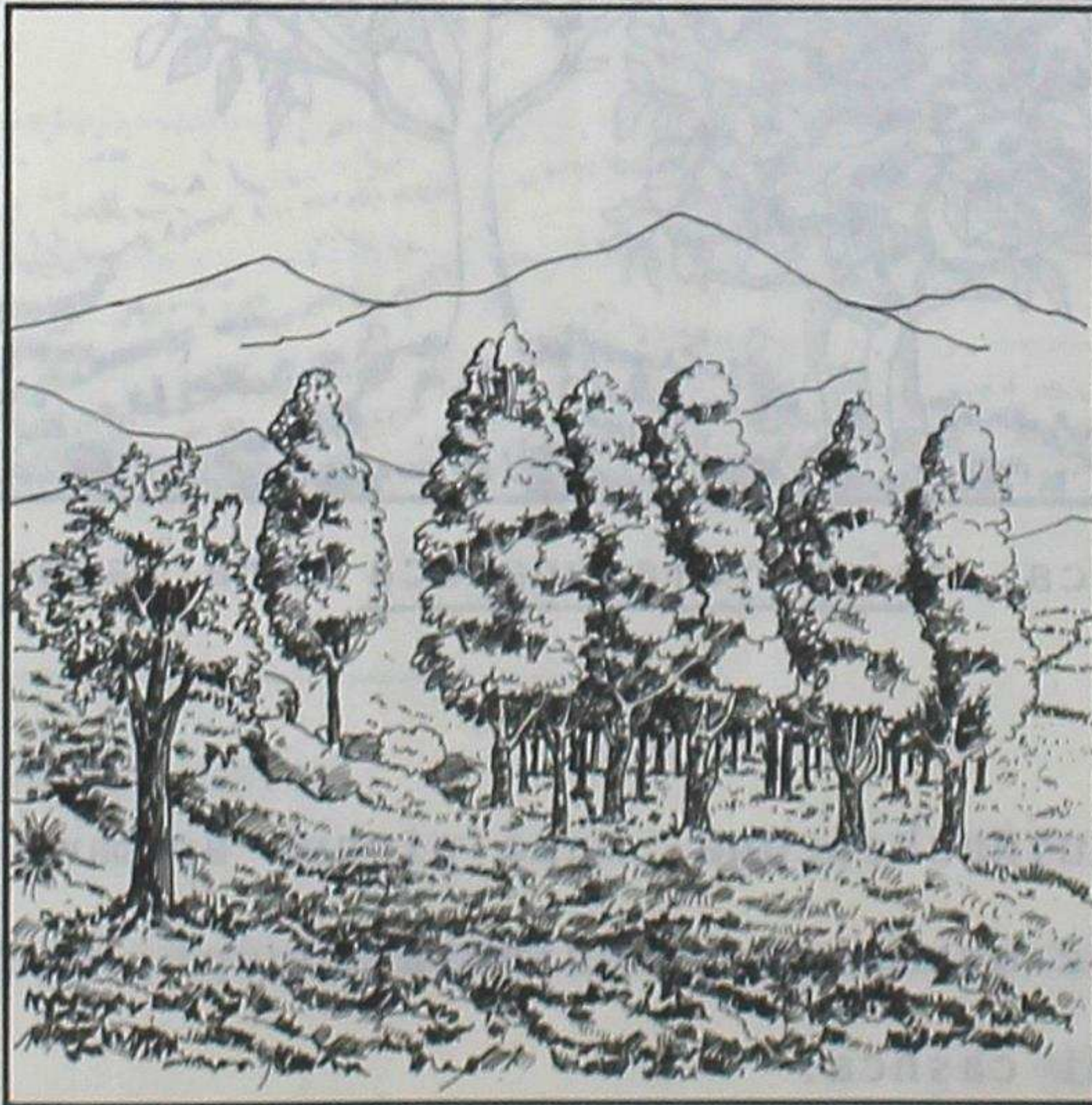
Cutin cunan pachapica yuracunataca ñucanchic tarpucpimi huiñan, mana achca tiyaimanta; mana paicunamantallatac huiñarimantapash. Shinalla tacmi tarpushpa catina canchic tamiacuna pacta-pacta tiyachun.

Huaquinpica yuracunata rantishpa tarpunchic, huanuta churashpa, yacuta jichashpa, imata alliyachishpapash charinchic ñucanchic causaipi yanapaimanta ima llancaita rurancapac mutsuriaimantapash.

## IMASAMI YURACUNA TIYASHCAMANTA

Ñucanchic causaipica ishcaisami yuracuna-tiyashcamanta ricsinchic, ñaupapachapi tiyashca yuracuna; shinallatac mushuc yura tarpuicunamantapash.

## ÑAUPA PACHAPI TIYASHCA YURACUNAMANTA



Cai yuracunaca, urcucunapi, huaicucunapi, maipipash huiñarishcallami, caicuna shina: arrayán, matatsic, pumamaqui, quishuar, punqui, laurel, romerillo, sachapulí, ranran, mullun, payama, curiquiru, pinllu, culli shuccunapash.

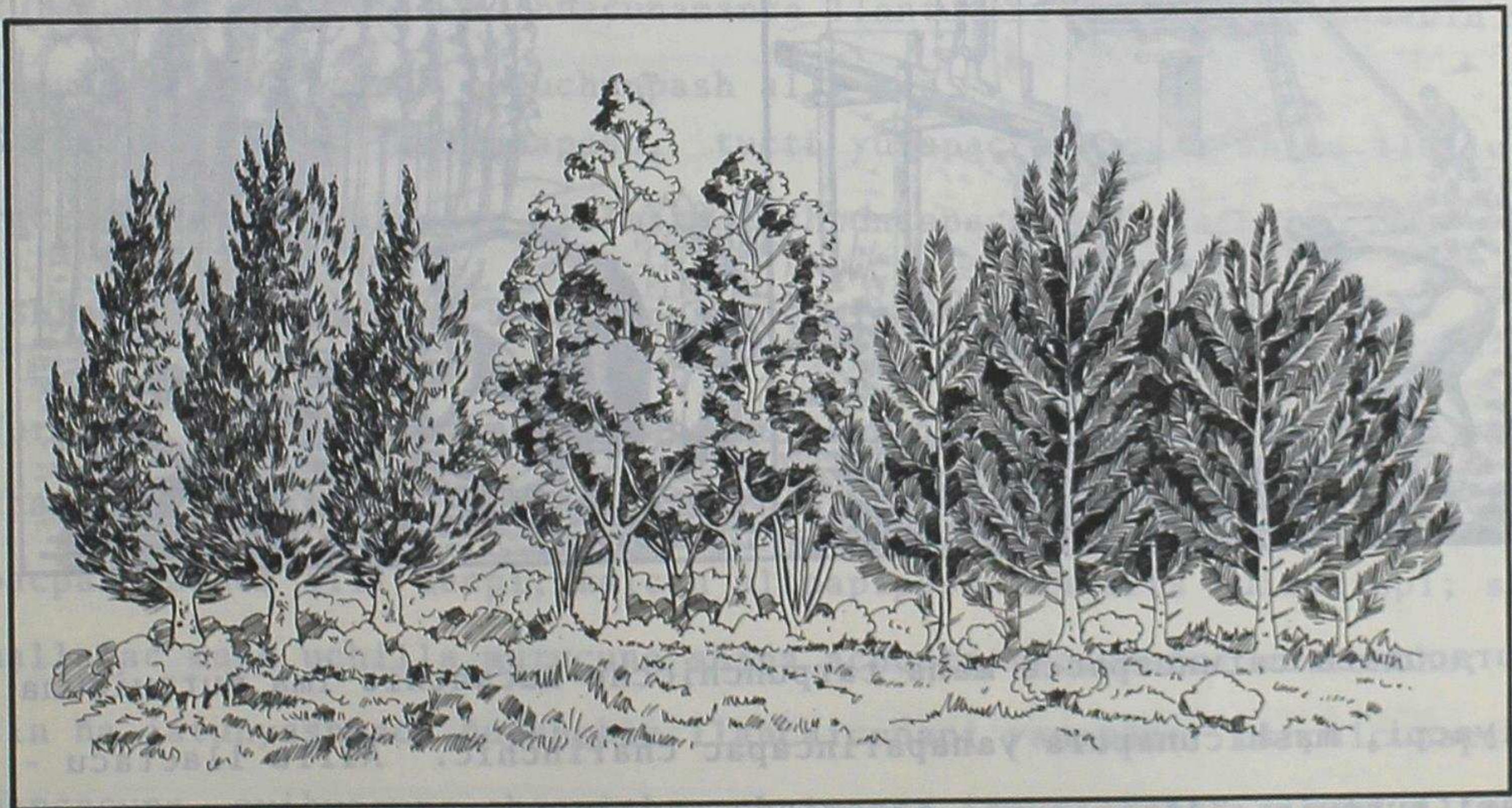


Cai yuracunaca cunanpica huaquinllami ricurin.

Cai sumac yuracunaca ñucanchicllata ña tucuchinacunchic yantata surcushpa, huaquincunaca sachacunata rupachishpapash tucuchinacun. Shinami cai yuracunaca asha, asha tucurishpa ricun, pipash mana mitsacpi cai sumac yuracunataca chincachicunchic.

Huaquinpica mana alli yuyashpapash shina ruranchic, cutin shuccunaca janpincapac, imacunapipash yanapacta yuyashpami huacaichishna charrinchic.

#### MUSHUC YURA TARPUICUNAMANTA



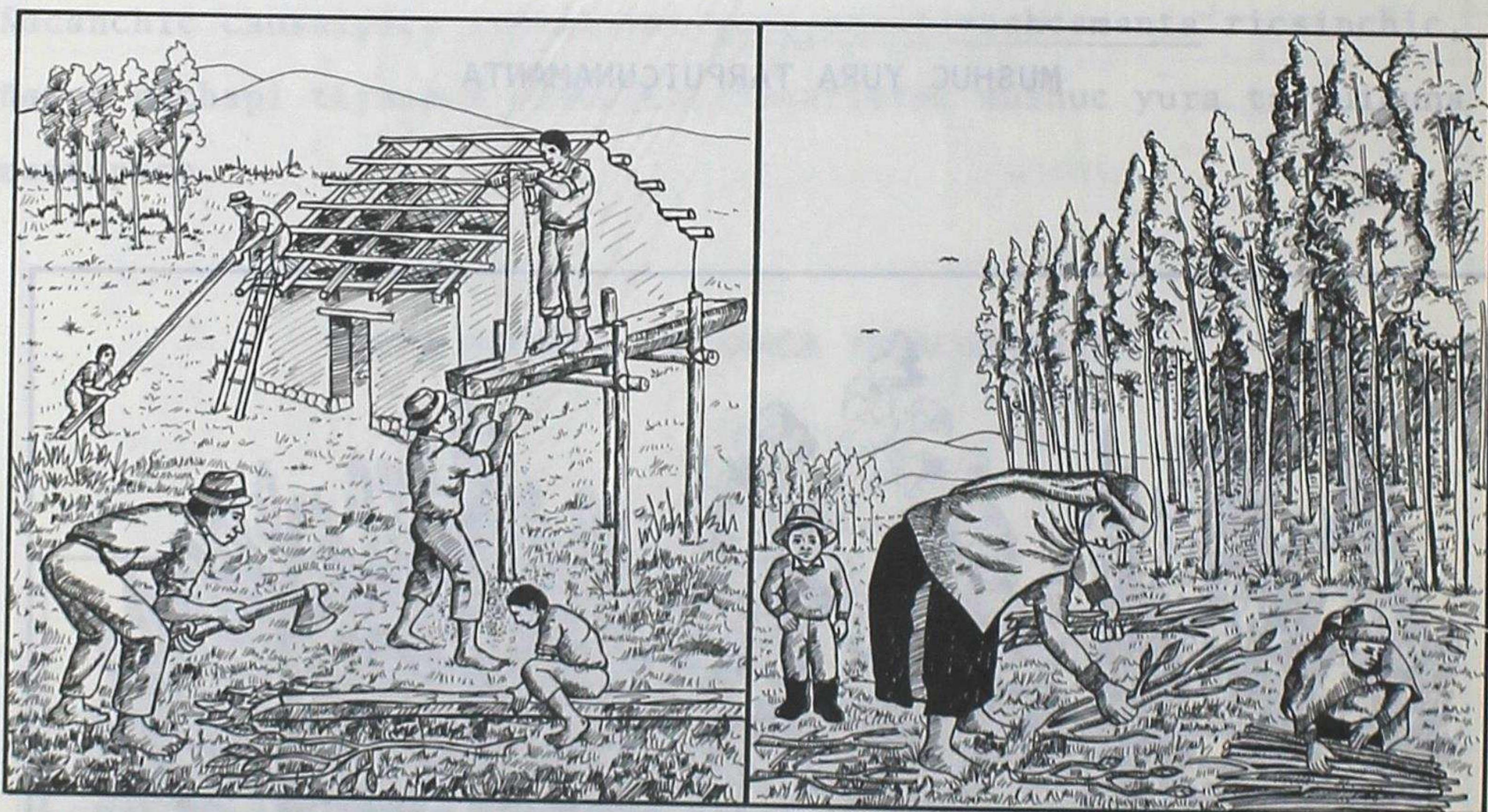
Cunan pachapica mushuc, shuc llactacunamanta apamushca yuracunata tarpushpa causanchic, shina: eucalipto, nogal, ciprés, pino, shuccunatapash. Cutin cai yuracunataca cunan pachapica ashtahuanmi tarpunchic, shinapash caicunaca ashtahuan cullquihuanmi rantinata ushanchic.



Ashtahuancarin cai yuracunata tarpuita, huiñachita, maltacaman charita ushancapacca achcata ricuchun mutsuncuna.

Mana ñucanchic ñaupá yuracuna shinaca causaita ushanchu, chaicunaca maipipash tarpucpi, huaquinpica paicunamantallatac huiñarishpapash, ima chiripacha-rupaipachapipash huiñaric cashcallami

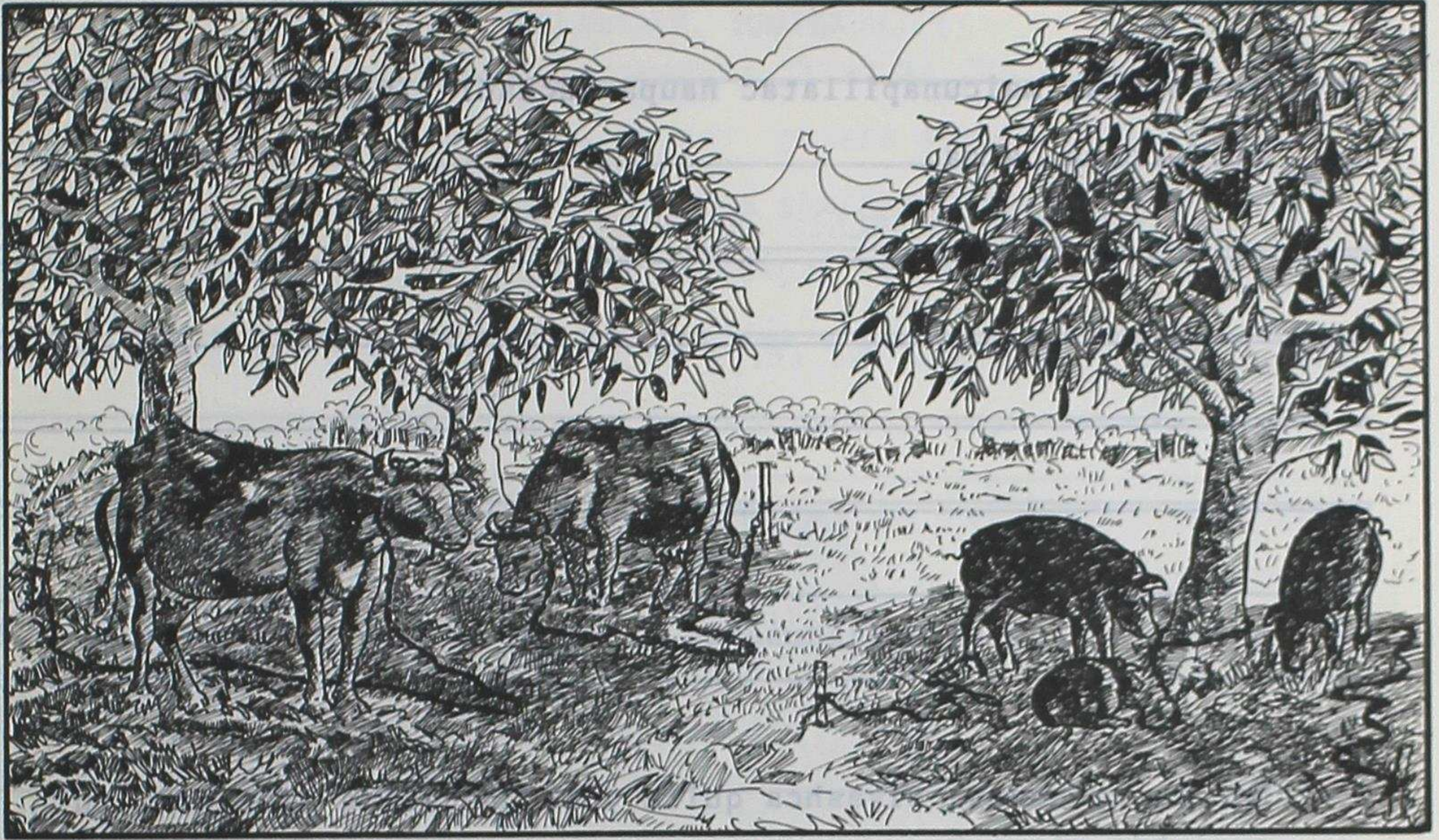
### YURACUNA IMA MUTSUICUNAPI YANAPAIMANTA



Yuracunata catuncapacca mana tarpunchicchu ñucanchic ima mutsuicuna tiyacpi, mashicunapura yanaparincapac charinchic. Aillu llactacunapi huaquin aillucuna, mashicuna huasita ruracupica ñapash euca-lipto caspita ima yuracunapash huasita rurachun cunchic, cutin paicunapash ñucanchic ima llancaicunata ruracupica shinallatacmi cutichishpa yanapancuna.

Cai yuracunamanta pancacuna, yura pallcacuna urmacpi pallashpa yanta shina imata yanuncapacpash mutsunchic.





Yuracunaca ñucanchic huihuacunamanca llantutami cun, cutin huaquin yu  
racunaca atallpacuna puñuchunpash alli can.

Shinallatac shuc yuracunapash, tucti yurapac murucuna shina llullu -  
rac cacpica huaquinpica millmata tushpuncapacmi mutsunchic.

Shinallatac yuracunaca janpincapac, micuncapacmi allicuna can.

Yuracuna tarpuitaca mana cuncanachu canchic, ashtahuan cai ñaupá pa -  
chamanta tiyashca yuracunataca mirachishpa catinami, cai yuracuna ima  
pacpash achca alli cacpi, maican allpapipash jahualta huiñaricpi; shi  
nallatac mana uchilla murucuna shina achcata ricuchunca mutsunchu; cu  
tin ña jatunyashpaca ñucanchic llancaicunapi yanapan: tarpuicunapica,  
pancacuna, quihuacuna chaquishpa chaimanta ismurishpaca sinchi allpa-  
cunataca alliyachin.

Yuracunaca paicunapac ancucunahuan allpata sinchiyachishpa charin ama  
huaira, tamia apachun.

Maipi achca yuracuna tiyacpica allpacunapash mana huaicu tucunchu, ma  
na tuñirinpashchu; shinallatac tamiacunatapash cayamun ñucanchic tar  
puicunapi yanapancapac.



YUYARISHUNCHIC:

1.- Ima shina, maicunapillatac ñaupa pachapi tiyashca yuracunaca huiñaccuna carca.

2.- Ñaupa pachamanta tiyashca quiuru yuracunaca ima nishpashi tucurishpa ricun.

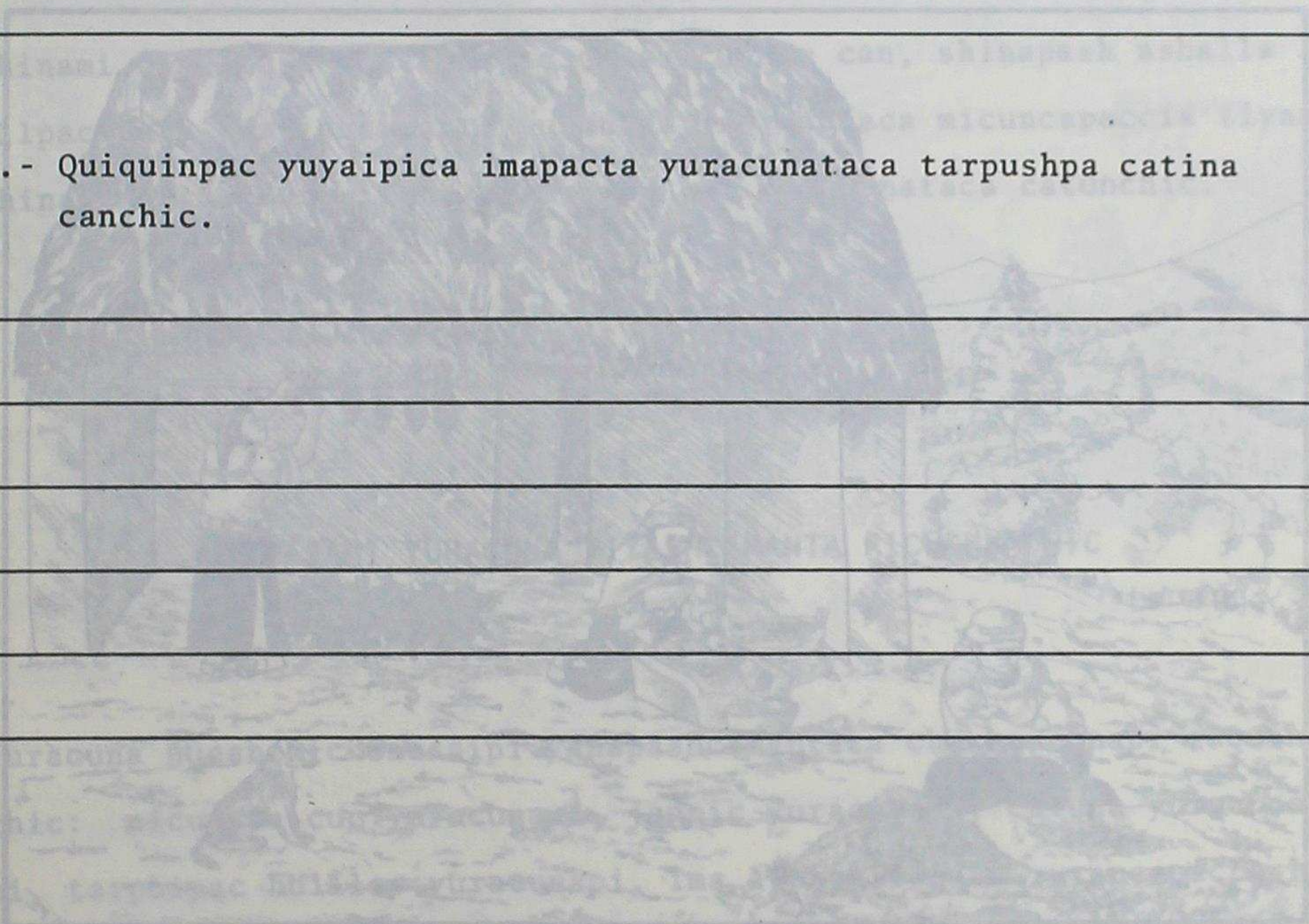
3.- Tucuiपुरa rimanacushpa quiquincunapac llactacunapi ñaupa pachamanta ricsishca yuracunata yuyarishpa quillcaichic.



4.- Cunan pachapica ima yuracunallatac tarpushpa caticunchic.

PICHANIBUI YACHACUNA (2)

5.- Quiquinpac yuyaipica imapacta yuracunataca tarpushpa catina canchic.



**MUSHUC SHIMICUNA:**

Llantu ..... Puyucuna tiyacpi, Inti mana ricu-  
rishca punchacuna.

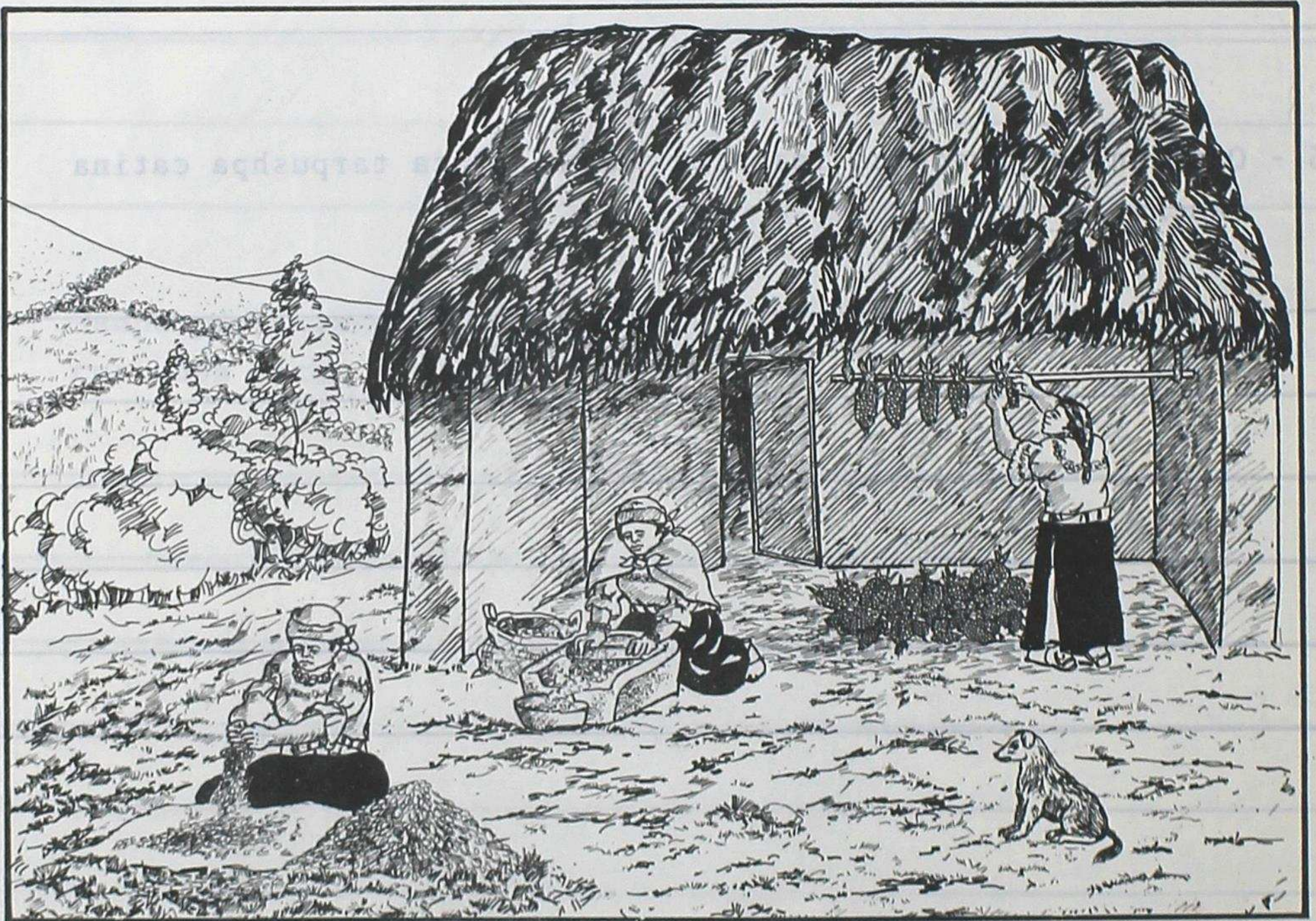
Quiru yuracuna ..... Jatun, racu yuracuna



PICHCANIQUI YACHACUNA (5)

YURACUNA ÑUCANCHIC CAUSAIPICA IMA SHINA YANAPAN

Cai shuyupi yuracunaca ima shina ñucanchic causaipi yanapaimanta ricushunchic.



Yuracuna ñucanchic causaipica sumactami yanapan. Ñucanchicman, huihuacunaman alli causaita cushpa.

Tucui murucunata tantachishpa tucui huatapac micunacuna tiyachunca huacaichishpami charinchic, shina maican mana ismuric murucunataca imapipash allichishpami churanchic, sarataca huayuncacunata rurashpa huarcunchic.

Huihuacunapac tucui Inti Pachapi micuna tiyachunca sarata pallasca quipami pancacunata huacaichinchic; shina huaquin murucunata pallasch



ca quipa huacaichishpa churanchic

Shinallatac ñucanchic ñaupá pachamanta yayacuna ima murucunata, huacaichishpa allichic cashcacuna shina: papata muyuta rurancapacca allashca quipaca intipi ishcai, quimsa punchacunacaman chaquichishpa huasi ucu cuchucunapi putcuta rurashpa, ucshacunata churashpa huacaichiccuna cashca. Cunancaman shina muyucunata surcuita munashpaca shinallatac ruranchic.

Shinami ñucanchic runacunapac causaicunaca can, shinapash ashalla allpacunata charishcamanta yuracuna, murucunaca micuncapaccla tiyan shinapash ima mutsuicuna tiyacpica cai murucunataca catunchic.

#### IMASAMI YURACUNA TIYASHCAMANTA RICUSHUNCHIC

Yuracuna ñucanchic causaipi yanapashcamantaca chashnacunapi raquinchic: micunata cuc yuracunapi, janpic yuracunapi, catuna yuracunapi, tarpuipac huillac yuracunapi, ima llancaicunata rurancapacpash mutsuriaimanta.



MICUNATA CUC YURACUNA



Cai yuracunaca ñucanchicman huihuacunamanpash micunacunata cushpa ya napan, shina: saramantaca mutita, cutata, canchata, asuata, shuccunatapash ruraita ushanchic. Llullu saramantaca chuchucata ruranchic, shuc micuicunatapash ruranata ushanchic.

Tsahuarmentaca tsahuar-mishquita upiancapac, asuatapash rurancapac surcunchic.

Shinami tucui sumac murucuna ñucanchic quiquin aillu llactacunapi charishcacunaca punchan punchan micuicunapi yanapancuna

Tiyashca quihuacuná huihuacunamanpash carancapac alli can, shina: alfalfa, vicia, pasto azul, ray grass, grama, shuccunapash.

Cai quihuacunata micushpa huihuacunapash sumac causaita charin.

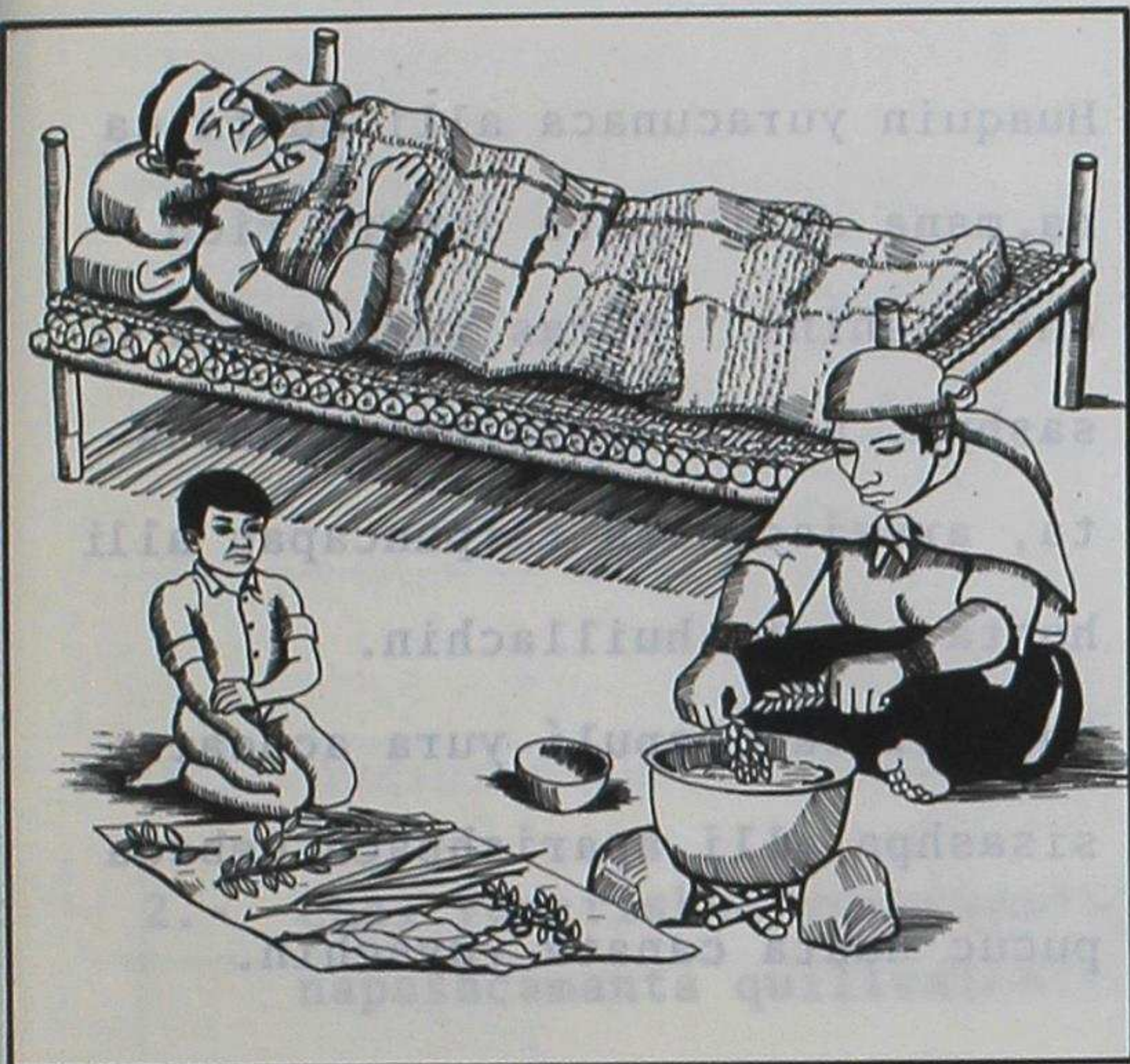


## UNCUICUNATA JANPIC YURACUNA

Yuracunaca runacunapac, huihuacuna-  
napac uncuicunata janpincapacmi  
mutsunchic.

Janpic yuracunata shina charin-  
chic: huacra callu, llantén, tsi-  
ni, manzanilla, ashnac yuyu, sau-  
cu, marcu, malva, matico, berro,  
toronjil, caballo chupa, shuccu-  
napash.

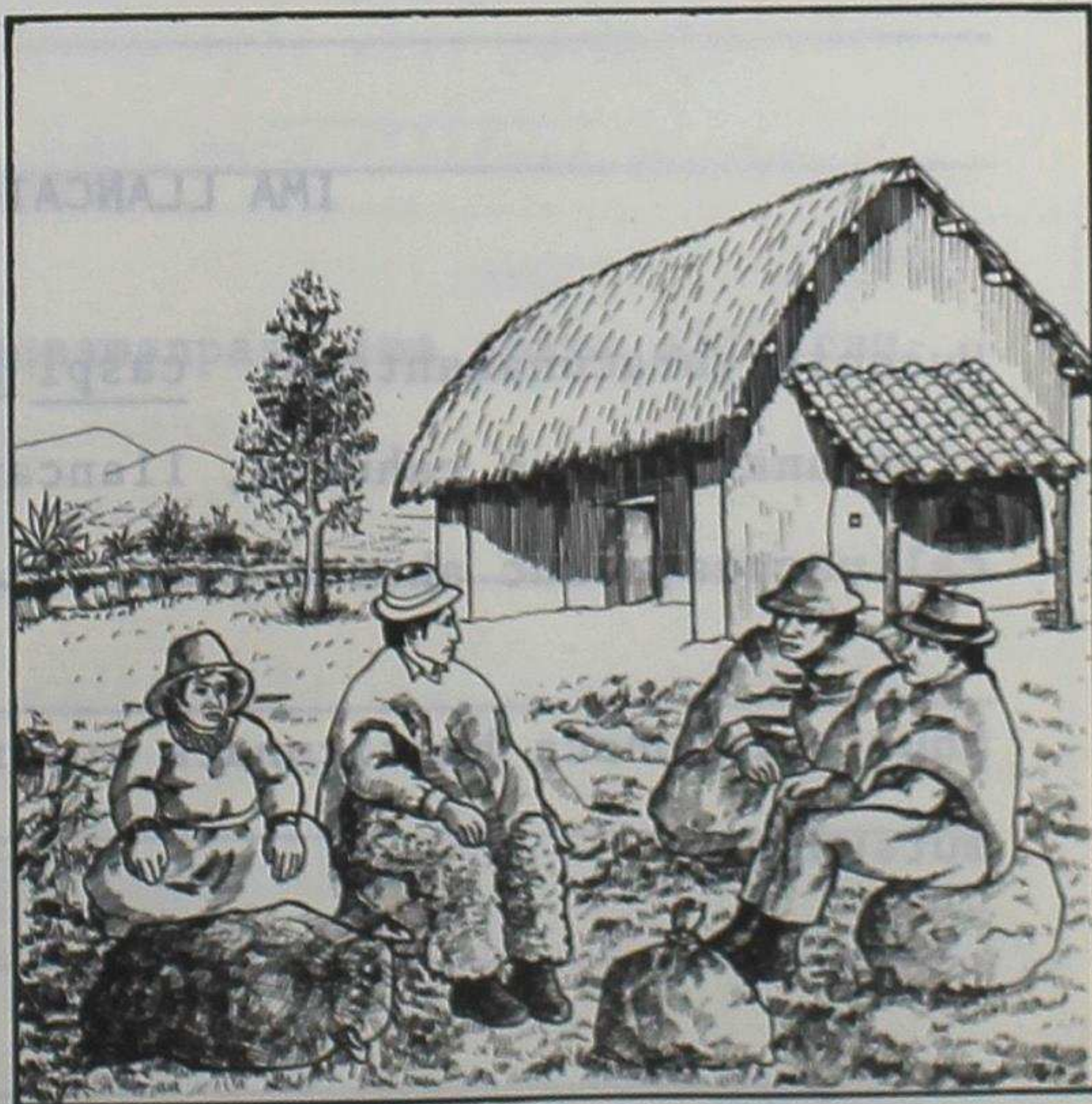
Cai yuracunataca huaquincunaca ya-  
nushpa, huaquincunaca tacashpa ima  
uncuicunata janpincapac ruranchic.



## CATUNCAPAC YURACUNA

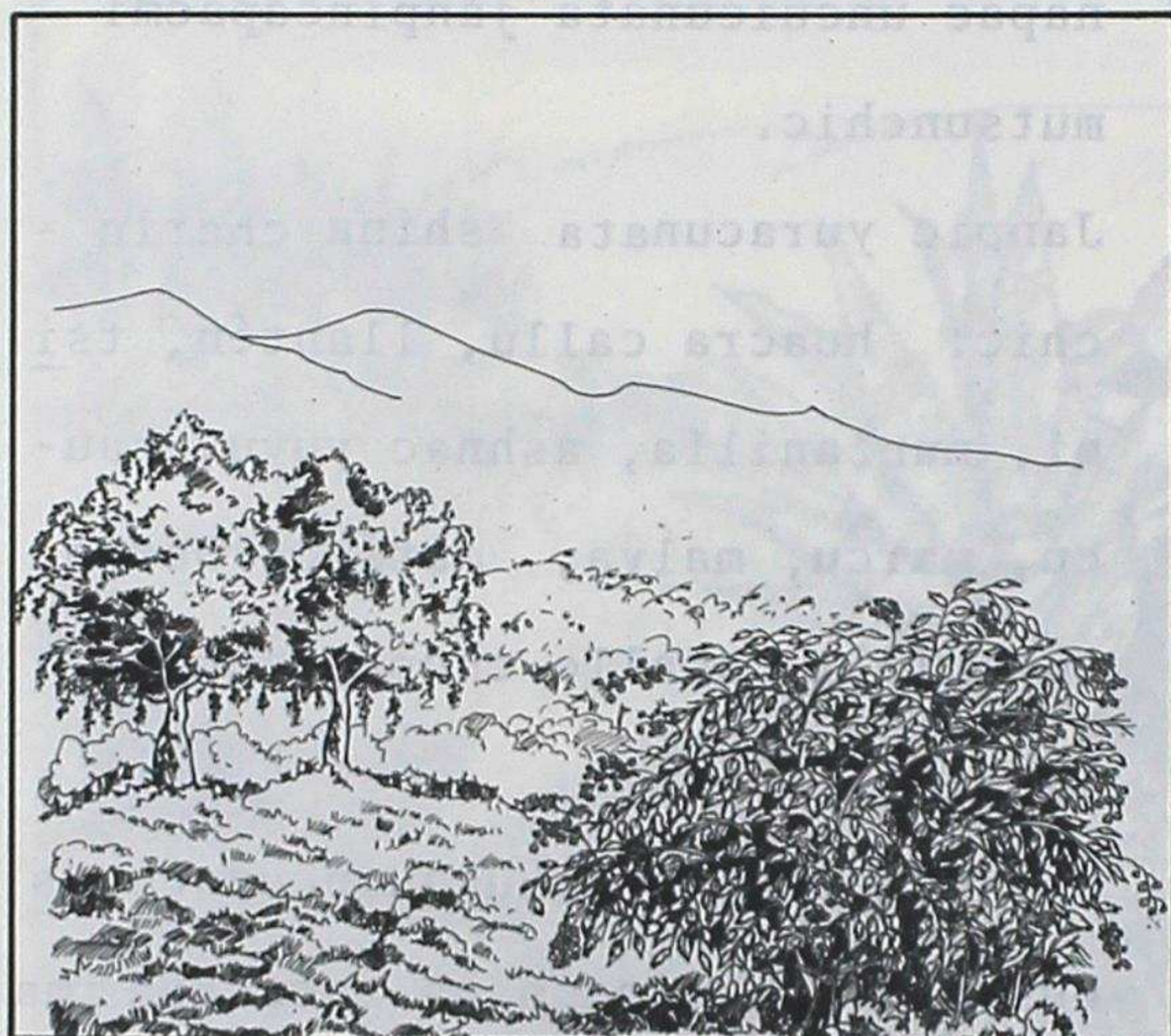
Yuracunataca mana achcata charic-  
mantaca jatunchicchu, mana cullqui  
charishcamantami jatun mutsuicuna  
chayacpi ña shinataca ruranchic, ma-  
na cashpaca huaquinpica chai mishu-  
cuna cullquita mañacpi yuracunata  
cuchun nishpami mañachincuna.

Yuracunataca aillu llactacunapi ñu-  
canchicpura mañachincapac, cutichin-  
capacallami charinchic.





## TARPUICUNAPAC HUILLAC YURACUNA



Huaquin yuracunaca alli huata cana, mana alli huata canata ricu - chin, shina: moras yura achca sisashpa, achca aparishpaca habas - ta, arvejacunata tarpuncapac alli huata canata huillachin.

Shinallatac capulí yura achcata sisashpa alli aparishpaca cebada pucuc huata canata yuyachin.

Cai yuracunata shina sisacta, mana sisacta ricushca quipaca maican murucuna, ima pachapi tarpuna, mana tarpunamantapash. ña yachanchic.

## IMA LLANCAICUNATA RURANCAPAC

Huaquin yuracunamantaca: caspi huishinacuna, micacuna (pucu), tiya - rinacuna, puñuna cahuitu, llancana caspicuna, chacanacuna, chacacuna, calluacuna, shuc ahuana caspicuna, shuccunata rurancapacpash alli can.

Shuc yuracunaca huasicunata rurancapac, huasicunata catachincapacpash mutsunchic.



YUYARISHUNCHIC:

1. Tucuiपुरa yuyarishpa, rimanacushpa, ima shina yuracunaca ñucanchic causaipi yanapan, chairaicu quillcashunchic.

MAICUNAPILLATAC TIYAC YURACUNAMANTA

2.- Chai yuyarishca yuracunata, ima mutsuicunapi ñucanchicman yanapashcamanta quillcaichic.

3.- Yuracuna, quihuacunaca huihuacunamanpash ima shina alli causaista cun.



4.- Quiquinpac llactacunapica ima yuracunallatac tarpuncapac alli,  
mana alli huata canata ricuchin.

5.- Quiquinpac llactapica imacunallatac yuracunahuanca ruranquichic.

**MUSHUC SHIMICUNA:**

Mica ..... Imacunatapash churancapac, micuncapac,  
upiancapac. Caicunaca maticuna shina-  
mi can, caspimanta rurashca.

Inti Pacha ..... Chaquishca pacha. Huaquin llactacuna-  
pica usia shutihuan ricsinchic.

Caspi Huishinacuna.. Micunacunata cuyuchincapac, huishinca-  
pac. Caicunaca caspimanta rurashcacu-  
nami can.

Huacaichina ..... Allichina.

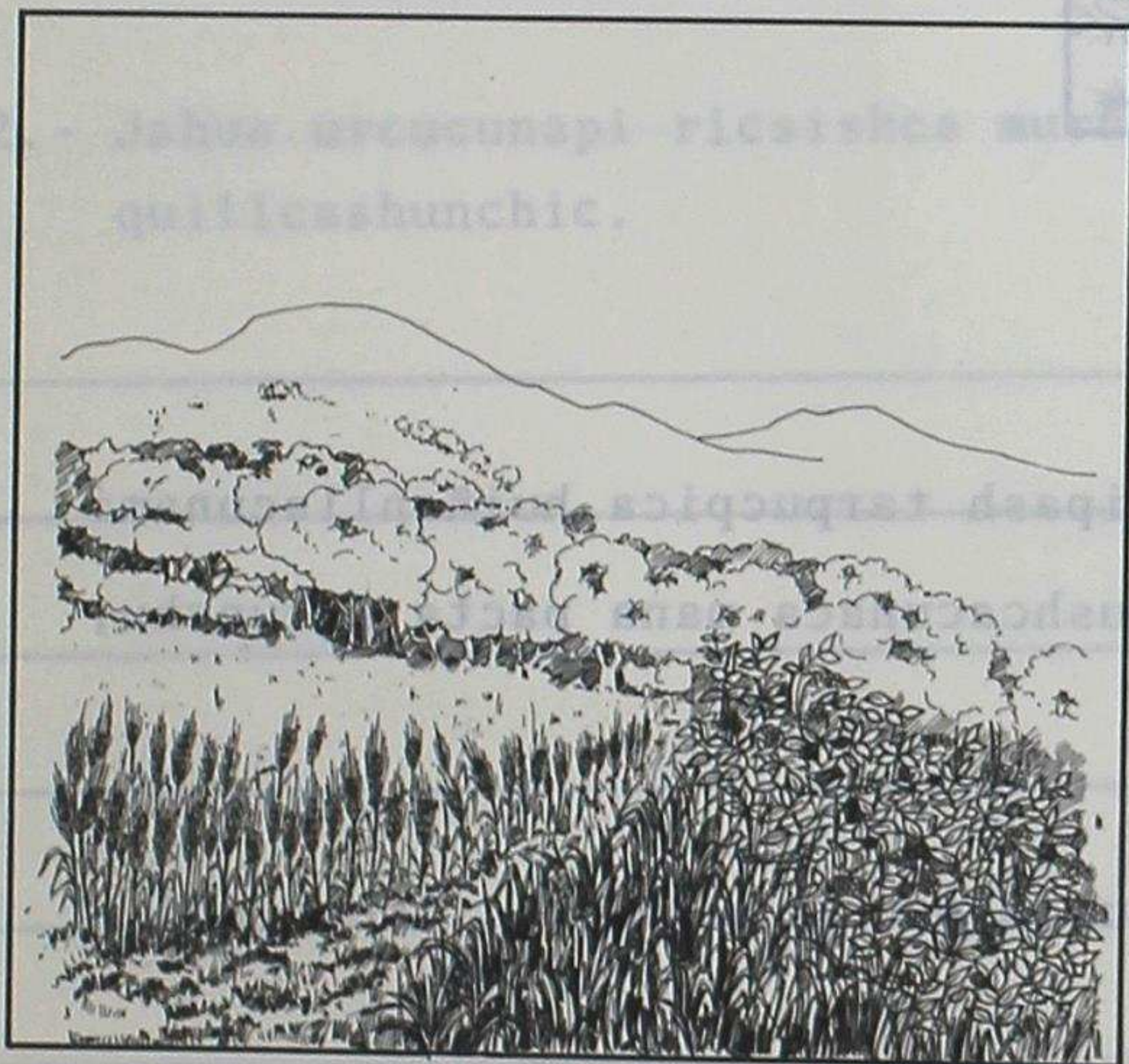


## SUCTANIQUI YACHACUNA (6)

### MAICUNAPILLATAC TIYAC YURACUNAMANTA

Yuracunataca maipipash causacta ricunchic. Maican suyucunapi, alli allpacunapi, alli chiripacha-rupaipacha tiyacpica allimi pucun.

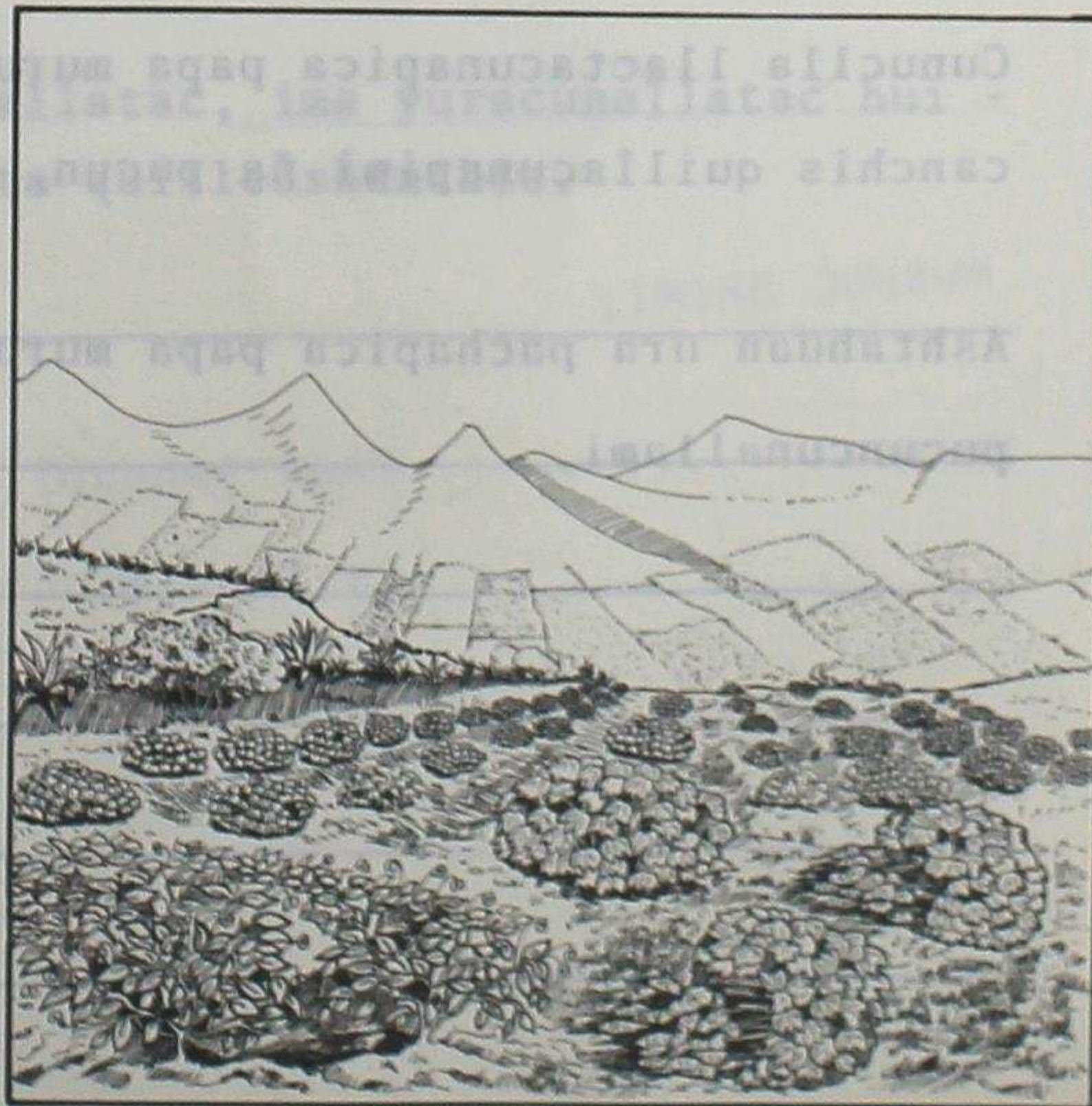
Shina yuracunataca ricunchic:



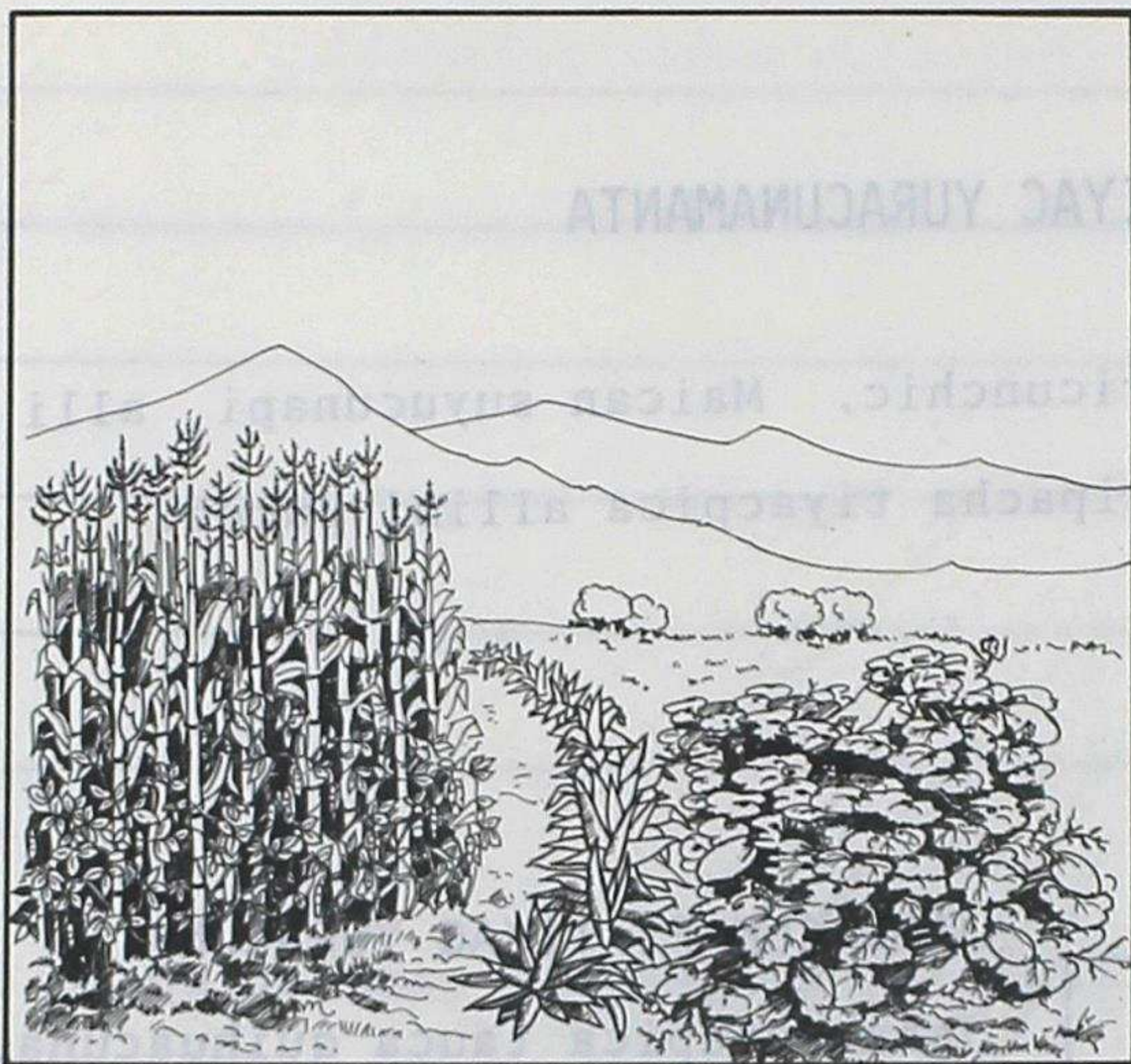
### JAHUACUNAPI TIYAC YURACUNA.-

Jahuacunapica tauca quihuacuna, yuracunapashmi tiyan. Chiricunapi, mana alli pachacunapipash causancunallami caicuna shina: ucsha, mortifio, cerotes, romerillo, shanshi, papa, habas, cebada, melloco, mashua, lenteja, tauri, shuccunapash. Caipica mana alli alli pachacuna caimantami mana allitaca pucun.

CHAUPIPI TIYAC YURACUNA.- Caimanca cunuclla pachami can; caicunapica papa, melloco, mashua, lenteja, tauri, trigo, cebolla tarpucunatami charinchic.







URAICUNAPI TIYAC YURACUNA  
 Urai llactacunaman allpacuna  
 ca cunucmi can; caipica ja -  
 huaman mana tiyashca yuracu-  
 nami huiñan, shina: sara, mo  
 rocho, poroto, arveja, zapa-  
 llo, mishqui muru aparic yu-  
 racuna shuccunatapash.

Muyu murucunaca maican pachacunapipash tarpucpica huiñanllacunami  
 chashnallatac tucui llactapi tarpushcacunaca mana pacta pucunchu;  
 chashna charinchic:

Chiri pachapica papa muruca mana utca pucunchu pusac, iscun qui -  
 llacunapimi pucun.

Cunuclla llactacunapica papa muruca utcalla pucun, chashna sucta,  
 canchis quillacunapimi ña pucun.

Ashtahuan ura pachapica papa murucunaca pichca quillacunapica ña  
 pucuncunallami.



YUYARISHUNCHIC:

1.- Sapan llactacunapi tiyac allpacunataca mashna patacunapi ra -  
quinchic.

2.- Jahua urcucunapi ricsishca murucunapac, yuracunapac shuticunata  
quillcashunchic.

3.- Chaupi llactacunapi ima murucunallatac, ima yuracunallatac hui -  
ñan; chai yuracunapac shuticunata quillcashunchic.







